

**MEGABLU**



**MEGADYNE**

# MEGABLUE

MEGABLUE is Megadyne's product, specifically created to give a good alternative to the classical plastic modular belt for the food processing industry.

This product, with its smooth surface, guarantees superior hygiene levels and, at the same time, works like a positive drive modular plastic belt.

Thanks to the tooth shape and pitch, MEGABLUE works with the same sprockets of modular plastic belts and is a good alternative where an extreme cleanability is needed. This belt helps saving water and time usually dedicated to the cleansing of a classical modular plastic belt.

All the MEGABLUE product line is FDA/USDA/USDA Dairy Approved.

It's the ideal combination of the benefits of a classical smooth conveyor with the mechanical and chemical advantages of a plastic modular belt.

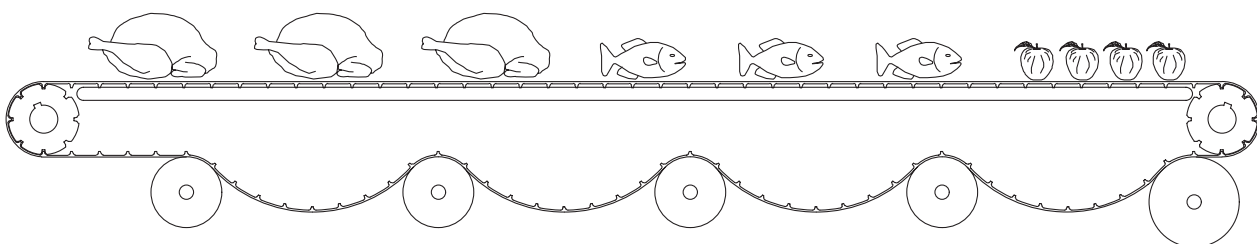
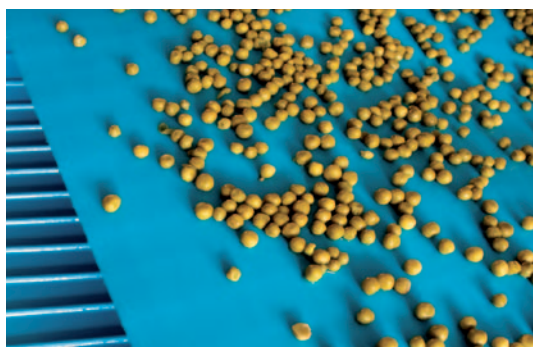
## **Main features:**

- Suitable to replace most of the 1" and 2" plastic modular belts;
- Available with Kevlar® tension member where the application requires high tensile strength and low elongation;
- Blue FDA approved Polyurethane water and chemical resistant;
- Perfectly sealed edges to avoid the contact of external agents with Kevlar® cords in case they are present (for MB 10 K);
- Flat and smooth back surface to help the clean-in-place process and to avoid bacteria deposit;
- FDA/USDA approved for wet food contact and transportation (meat and poultry).

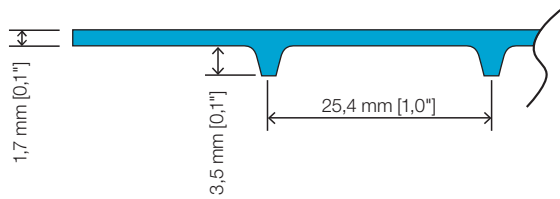
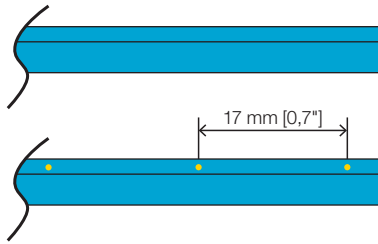
## Applications

Megadyne's **MEGABLUE** product line was conceived keeping in mind the specific requirements of the food processing industry in a wide variety of sectors such as but not limited to:

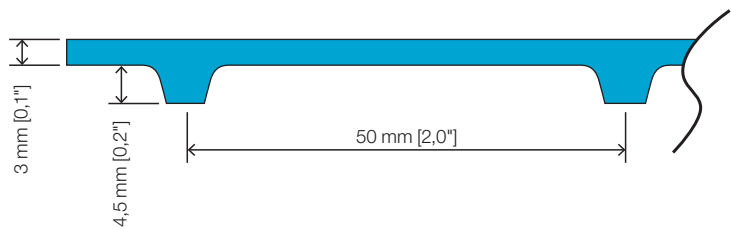
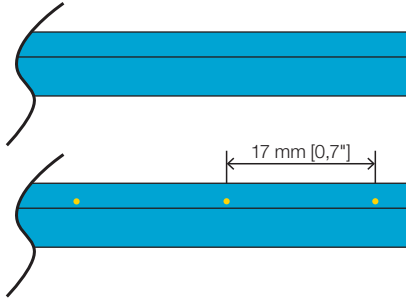
- BAKERY
- MEAT, POULTRY AND SEAFOOD
- BEVERAGE
- FRUIT AND VEGETABLE



## MB 10, MB 10K



## MB 20, MB 20K



|   |                    |  |
|---|--------------------|--|
| Nominal Pitch   | mm                 |  |
|   | inches             |  |
| Belt maximum allowable tension                                      | N/25,4 mm of width |  |
| Belt max. allowable tension with finger joint                       |                    |  |
| Belt max. allowable tension with Alligator® stainless rivets system |                    |  |
| Belt max. allowable tension with Alligator® plastic rivets system   |                    |  |
| Belt weight   | g/cm(W)/m(L)       |  |
|   | lbs/inch(W)/ft(L)  |  |
| Min. diameter of the pulley   | mm                 |  |
|   | inches             |  |
| Hardness  | Shore A            |  |
| Service Temperature Range   | °C                 |  |
|   | °F                 |  |
| Standard color  | Blue               |  |

| MB 10                          |                 | MB 20          |                 |
|--------------------------------|-----------------|----------------|-----------------|
| Normal version                 | Kevlar® version | Normal version | Kevlar® version |
| 25,4<br>1"                     |                 | 50<br>2"       |                 |
| 200                            | 220             | 200            | 220             |
| See the fastening options page |                 |                |                 |
| 30                             |                 | 60             |                 |
| 0,048                          |                 | 0,099          |                 |
| 50,8                           |                 | 95             |                 |
| 2                              |                 | 3,74           |                 |
| 95°                            |                 |                |                 |
| -25 °C                         |                 | +70 °C         |                 |
| -13 °F                         |                 | +158 °F        |                 |
| Blue                           |                 |                |                 |

### FDA APPROVED URETHANE FOR FOOD CONTACT

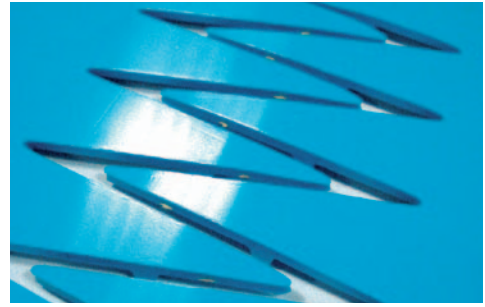
|                                       |                        |                                   |      |
|---------------------------------------|------------------------|-----------------------------------|------|
| Min. length factory welded belt       | mm                     | <b>1200</b> for 530 mm wide belt  |      |
|                                       | inches                 | <b>47,25</b> for 530 mm wide belt |      |
| Standard roll length                  | meters                 | 100                               | 100  |
|                                       | feet                   | 328                               | 328  |
| Standard tension member pitch         | mm                     | -                                 | 17   |
|                                       | inches                 | -                                 | 0,67 |
| Max. available width                  | mm                     | 530                               | 530  |
|                                       | inches                 | 21                                | 21   |
| Coefficient of friction on back side  | PU vs. Stainless Steel | 0,69-0,86                         |      |
|                                       | PU vs. UHMWPE          | 0,17-0,30                         |      |
| Coefficient of friction on teeth side | PU vs. Stainless Steel | 0,58-0,69                         |      |
|                                       | PU vs. UHMWPE          | 0,22-0,31                         |      |

\*Custom construction and rework on request

# Fastening options

## Finger joint

The “Finger Joint” factory weld assures high break resistance thanks to the improved length of the surface of contact and the overlap of tension members where they're present.



## Plastic Rivet joint

The Plastic rivet joint is ideal in those application where the belt needs to be constantly assembled and disassembled to be cleaned and rinsed. The rivet's FDA-approved material guarantees maximum safety when in contact with the food.

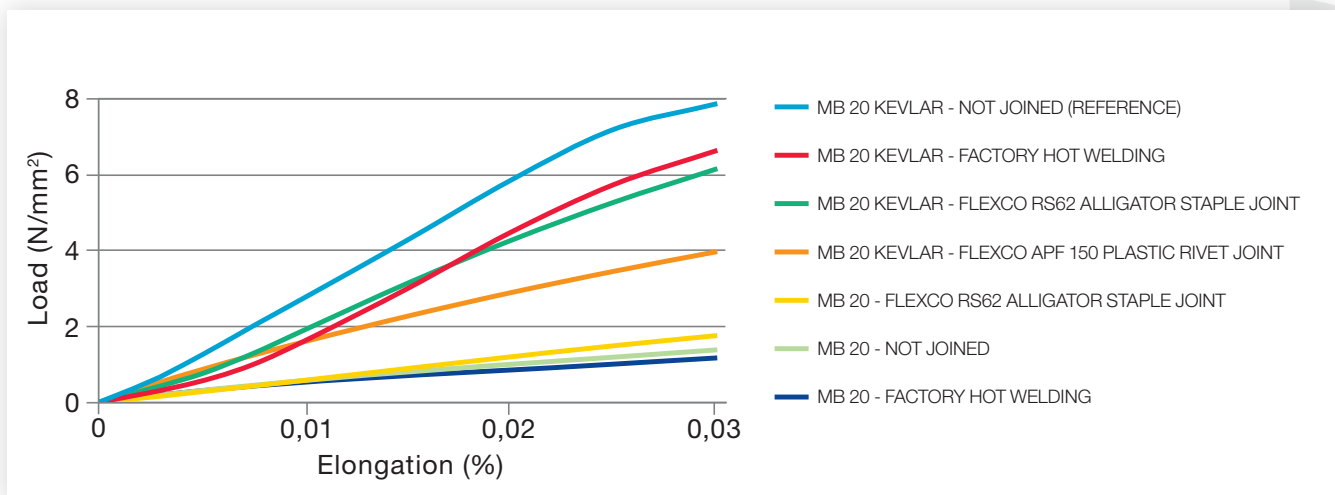


## Metal Staples joint

All the advantages of a system that can be assembled and disassembled, linked with the strength of metal staples. Stainless steel avoids any deposit of rust caused by the continuous contact of the belt with water.



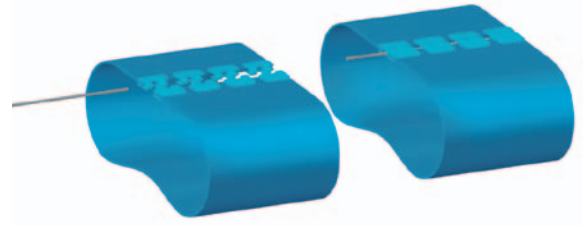
# Elongation Graphic



# Fastening options

## Plastic Rivets and metal staples

The belt will be supplied with FDA approved Blue plastic rivets or stainless steel staples already mounted on the edges. Once the belt has been placed on the machine, the customer will join the edges using the appropriate hinge that is provided with the belt.



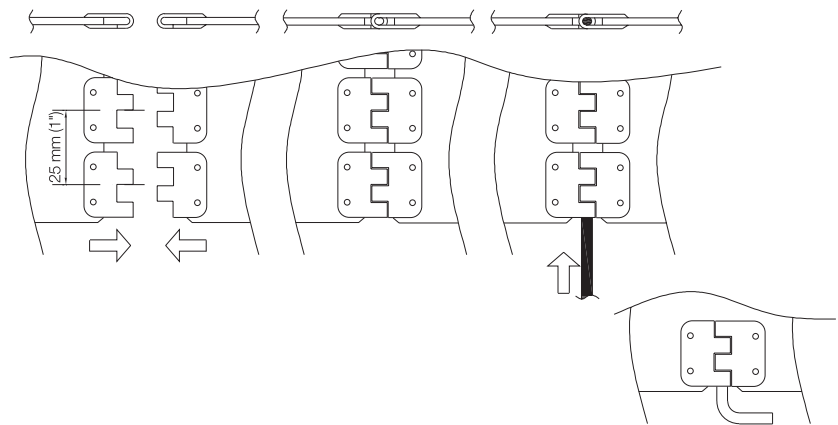
## Fastening elements characteristics

|                          | Splicing method         | Code         | Suitable for belts with a tensile strength of up to: |             | Hinge material |
|--------------------------|-------------------------|--------------|--|-------------|----------------|
|                          |                         |              |  |             |                |
| MB 10 Belt               | Blue PU rivet           | APF 100 Blue | 75 N/mm*   | 400 lb/in*  | NK 2,50        |
| MB 20 Belt               |                         | APF 150 Blue | 100 N/mm*  | 560 lb/in*  | NK 3,50        |
| MB 10 Belt<br>MB 20 Belt | Stainless steel staples | RS 62        | 200 N/mm*  | 1110 lb/in* | NCS 62         |

\*NOTE: In any case, the belt reaches its maximum elongation value before the fastening element reaches its breaking limit.

## Plastic rivets splicing procedure

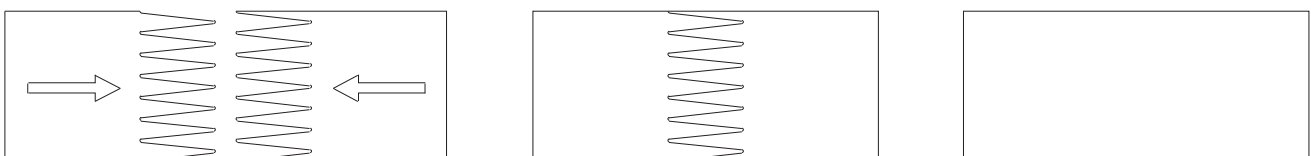
1. Place the belt on the conveyor.
2. Match the edges until the grooves are aligned.
3. Insert the hinge material.
4. Provide a 90° bend to the free edges of the hinge material while applying a little heat at the bend point with a lighter.



## Finger joint factory welding

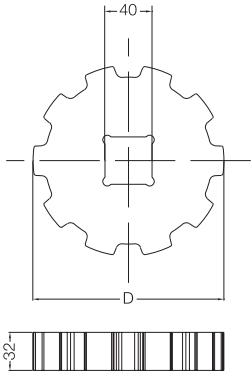
The belt will be supplied already spliced, this means the customer has to be able to dismantle the machinery to mount the belt.

**Note:** This is the safest method to supply the belt in terms of its cleanability, the homogeneity of the surface and resistance to aggressive bacteria. The finger spliced belt looks exactly like an endless belt.



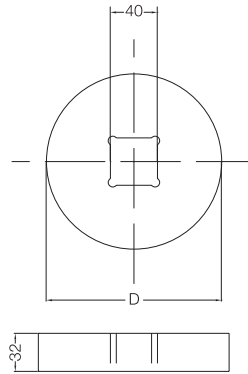
# PULLEYS

## MB 20



### Sprocket

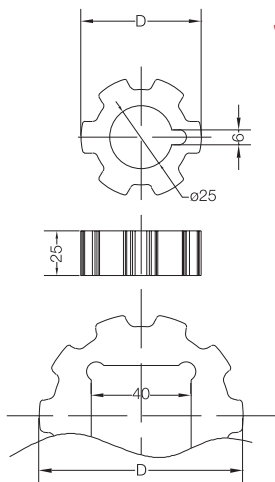
| Article  | Z  | D   |     |
|----------|----|-----|-----|
|          |    | mm  | in  |
| MB20-Z06 | 6  | 95  | 3,7 |
| MB20-Z08 | 8  | 128 | 4,9 |
| MB20-Z10 | 10 | 161 | 6,3 |
| MB20-Z12 | 12 | 193 | 7,6 |



### Idler pulley

| Article | Z  | D   |     |
|---------|----|-----|-----|
|         |    | mm  | in  |
| MB20-06 | 6  | 83  | 3,3 |
| MB20-08 | 8  | 116 | 4,6 |
| MB20-10 | 10 | 149 | 5,9 |
| MB20-12 | 12 | 181 | 7,1 |

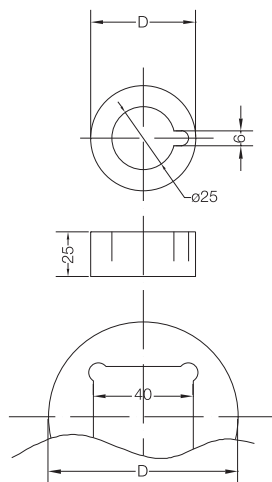
## MB 10



### Sprocket

| Article  | Z  | D  |     |
|----------|----|----|-----|
|          |    | mm | in  |
| MB10-Z06 | 6  | 48 | 1,9 |
| MB10-Z08 | 8  | 65 | 2,6 |
| MB10-Z10 | 10 | 81 | 3,2 |
| MB10-Z12 | 12 | 97 | 3,8 |

■ Cylindrical bore



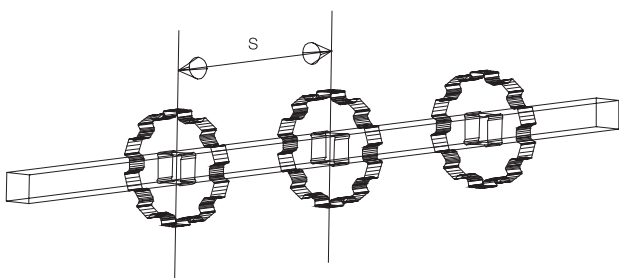
### Idler pulley

| Article | Z  | D  |     |
|---------|----|----|-----|
|         |    | mm | in  |
| MB10-06 | 6  | 41 | 1,6 |
| MB10-08 | 8  | 58 | 2,3 |
| MB10-10 | 10 | 74 | 2,9 |
| MB10-12 | 12 | 90 | 3,6 |

■ Cylindrical bore

Material: White HDPE

## INSTALLATION RULES



### Axial distance between sprockets on the drive shaft (S)

|              | MB 10 |    | MB 20 |    |
|--------------|-------|----|-------|----|
|              | mm    | in | mm    | in |
| FULL LOAD    | 50    | 2  | 75    | 3  |
| LOW/MED LOAD | 100   | 4  | 150   | 6  |

Pulleys can be secured on the drive shaft using a stop ring. For pulleys with a square bore use a cotter pin.

The data and information contained in the present catalogue are up-to-dated to the date of the catalogue's printing. Megadyne Spa reserves the right to modify the specifications, performances and other information relating to the belts described in the present catalogue, at any time at its own discretion, without any prior notice. For updating refer to our web site [www.megadynegroup.com](http://www.megadynegroup.com).

Technical specifications, performances and other information provided in the present catalogue are indicative and do not bound Megadyne unless such specifications, performances or other information are expressly agreed in the agreement with the customer.

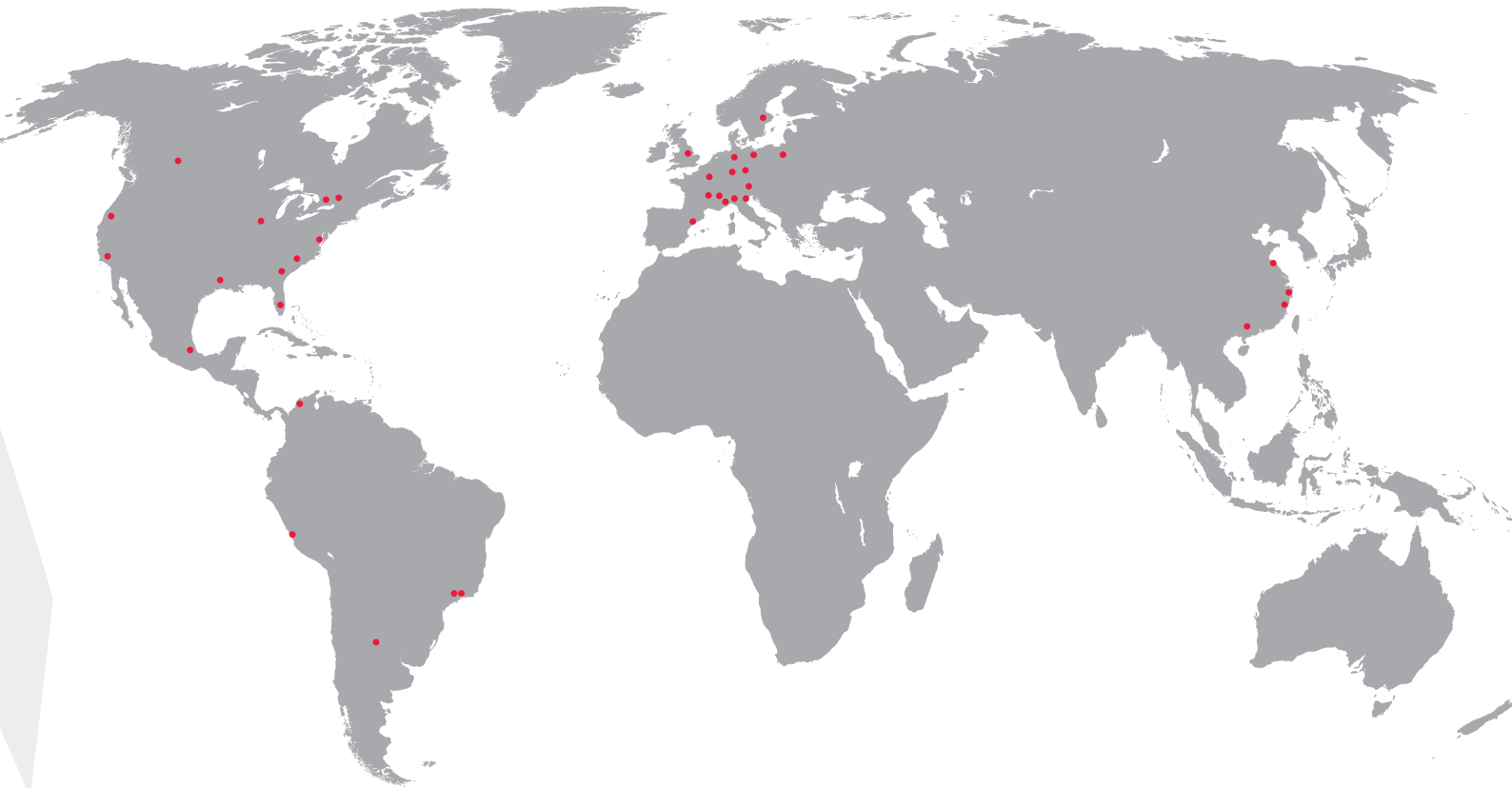
We also recommend to read carefully the following documents in our web site [www.megadynegroup.com](http://www.megadynegroup.com):

- Megadyne General Conditions of Sale (comprising the warranty)
- Theoretical Belt Life
- Drive Components: Storage, Installation, Maintenance and Troubleshooting Handbook
- Belts standard use condition and temperature.

Copyright Notice: Megadyne Spa copyright. All rights reserved. Megadyne is and shall remain the owner of all rights on drawings, technical specifications and any other information contained in the present catalogue or otherwise communicated by Megadyne Spa to the customer. The customer shall not disclose such information to third parties or use such information for purposes different from the definition of the order to Megadyne Spa, unless upon prior written authorization of Megadyne.







**MEGADYNE**



**Jason Industrial Inc.®**  
A MEGADYNE GROUP CO.

**MEGADYNE HEADQUARTERS**

Via Trieste 16, 10075  
Mathi (TO) - ITALY  
Ph.: +39 011-926-8052  
mail@megadyne.it  
[www.megadyne.it](http://www.megadyne.it)

**JASON HEADQUARTERS**

340 Kaplan Drive  
Fairfield, NJ 07004  
Ph.: +1 973-277-4904  
Fax: +1 973-277-1651  
webrequest@jasonindustrial.com  
[www.jasonindustrial.com](http://www.jasonindustrial.com)

**EUROPE  
MIDDLE EAST  
AFRICA**

MATHI (Italy)\*  
VENICE (Italy)  
MILAN (Italy)\*  
MINSK (Belarus)  
PRAGUE (Czech Republic)  
PARIS (France)\*  
ST. JEANNE DE MAURIENNE (France)\*  
LYON (France)  
BORCHEN (Germany)  
ULM (Germany)\*  
BUDAPEST (Hungary)  
BYDGOSZCZ (Poland)\*  
BARCELONA (Spain)\*  
DUDLEY (U.K.)  
STOCKHOLM (Sweden)

**AMERICAS**

FAIRFIELD, NJ (U.S.A.)  
CAROL STREAM, IL (U.S.A.)  
BELL, CA (U.S.A.)  
TAMPA, FL (U.S.A.)  
IRVING, TX (U.S.A.)  
PORTLAND, OR (U.S.A.)  
CHARLOTTE, NC (U.S.A.)\*  
GREENVILLE, SC (U.S.A.)\*  
DORVAL, Quebec (Canada)  
MISSISSAUGA, Ontario (Canada)  
EDMONTON, Alberta (Canada)  
AZCAPOTZALCO (Mexico)  
SAO PAULO (Brasil)  
SOROCABA (Brasil)  
CARTAGENA (Colombia)  
CORDOBA (Argentina)  
LIMA (Peru)

**ASIA / PACIFIC**

NINGBO (P.R.C.)\*  
QINGDAO (P.R.C.)\*  
SHANGHAI (P.R.C.)  
FOSHAN (P.R.C.)

**\*MANUFACTURING FACILITIES**